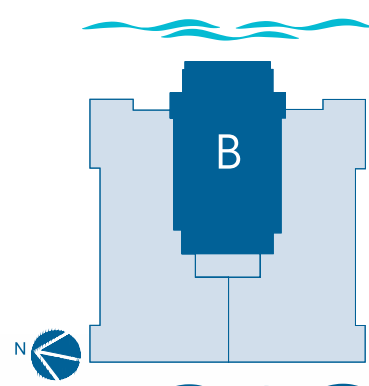
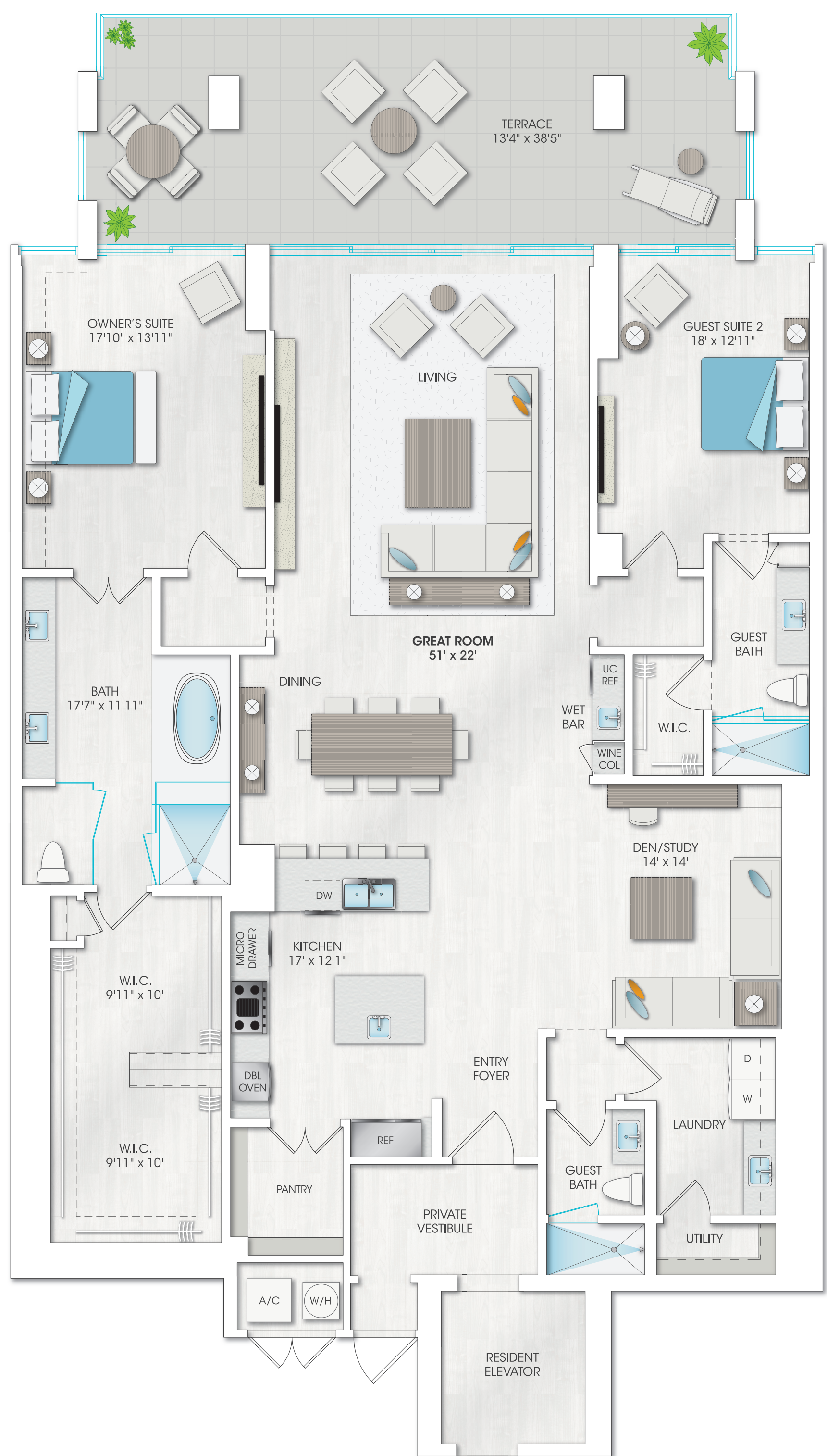


BEACHWALK

2 BEDROOMS, 3 BATHS + DEN

2,706 SF LIVING AREA | 505 SF TERRACE | 3,211 SF TOTAL



The Beachwalk enjoys direct ocean views spanning more than 45 ft. across the Great Room, Owner's Suite and Guest Suite. The grand terrace provides over 500 sq. ft. of outdoor living area overlooking the shimmering Atlantic Ocean.

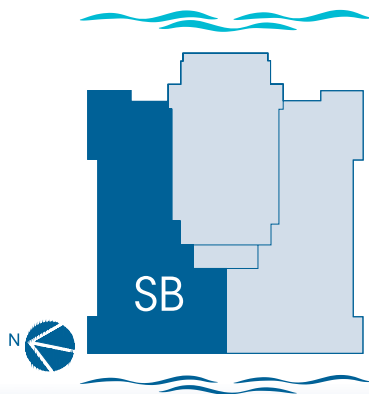
9 Residences Available



5000 NORTH OCEAN

SEABREEZE

3 BEDROOMS, 4.5 BATHS + FAMILY ROOM
3,753 SF LIVING AREA | 765 SF TERRACE | 4,518 SF TOTAL



The Seabreeze maximizes a flow-through design to take full advantage of its dramatic Ocean views to the east and sweeping Intracoastal/City Views to the west. Expansive east and west terraces provide a tranquil gathering place to enjoy South Florida sunrises and sunsets.

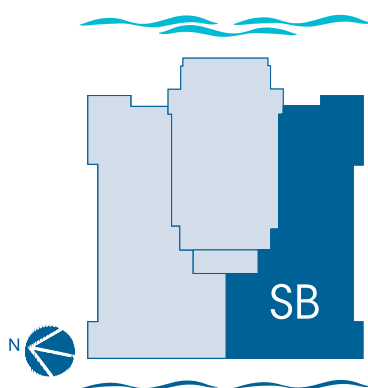
17 North Facing, 17 South Facing Residences Available





SEABREEZE SOUTH

3 BEDROOMS, 4.5 BATHS + FAMILY ROOM
3,753 SF LIVING AREA | 765 SF TERRACE | 4,518 SF TOTAL



The Seabreeze maximizes a flow-through design to take full advantage of its dramatic Ocean views to the east and sweeping Intracoastal/City Views to the west. Expansive east and west terraces provide a tranquil gathering place to enjoy South Florida sunrises and sunsets.

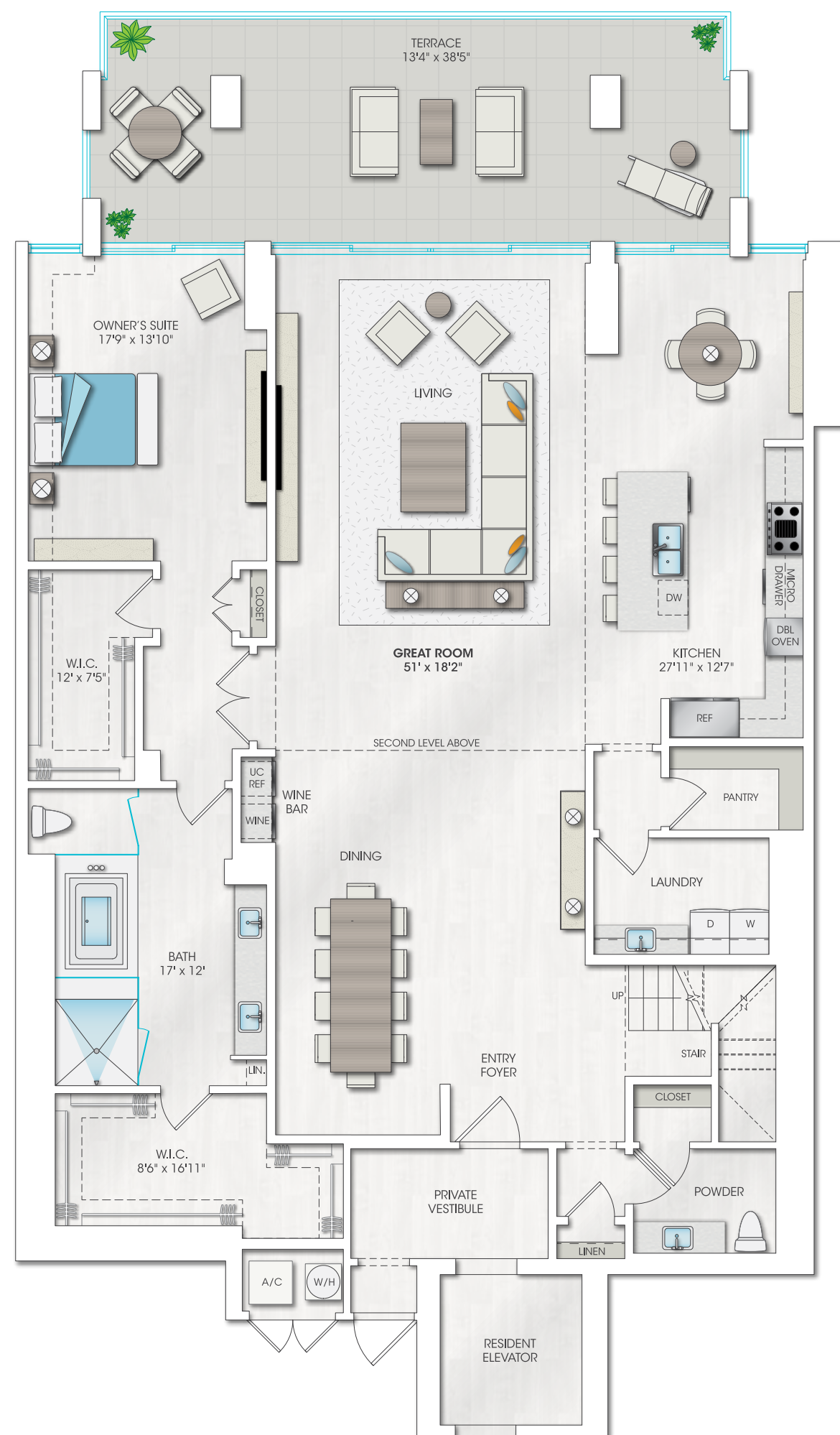
17 North Facing, 17 South Facing Residences Available



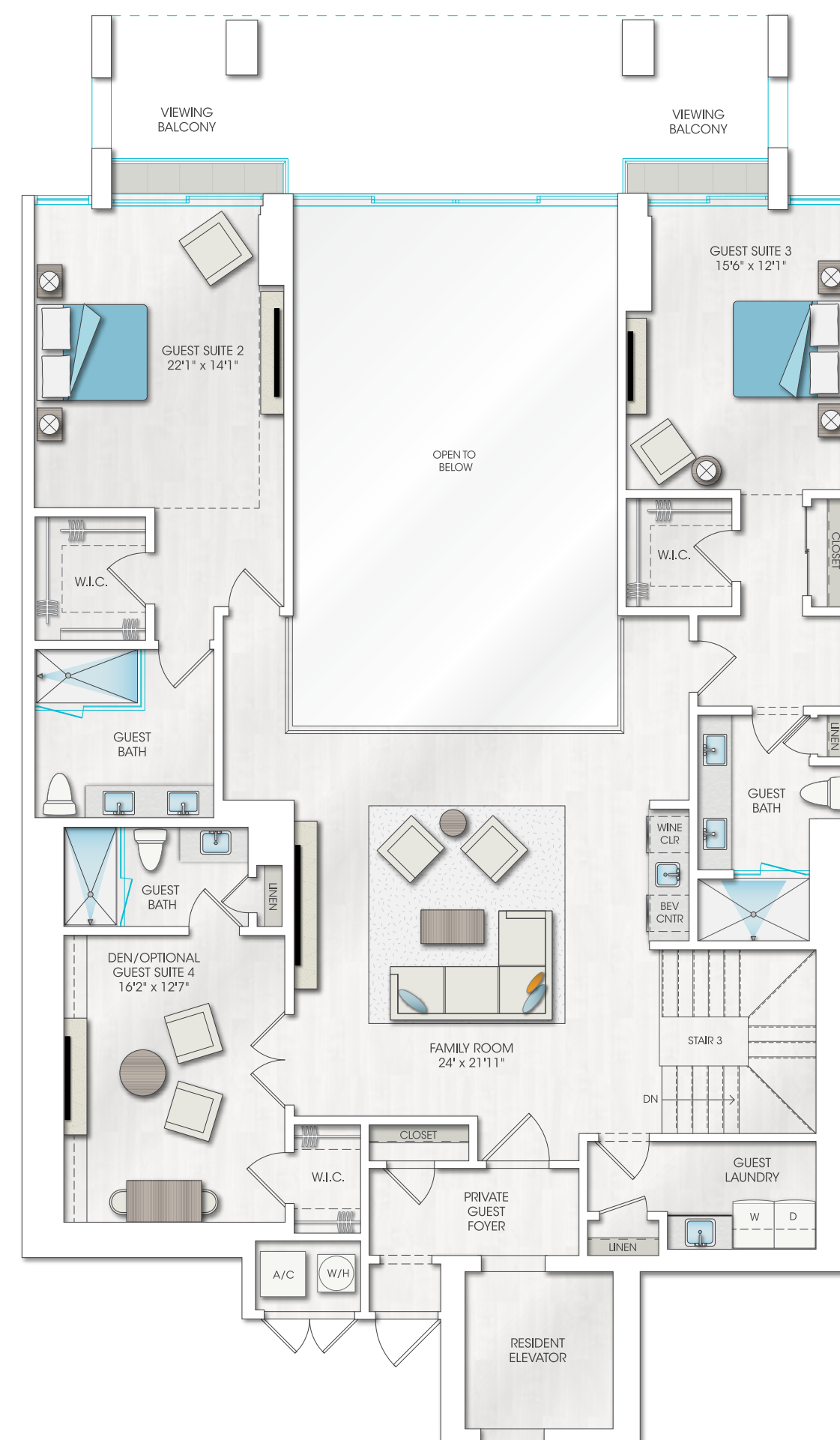
SEAGLASS | 4 BEDROOMS, 4.5 BATHS + FAMILY ROOM

4,897 SF LIVING AREA | 545 SF TERRACE | 5,442 SF TOTAL

LOWER LEVEL



UPPER LEVEL



The two-story Seaglass offers breathtaking oceanfront views through soaring walls of glass that rise to nearly 20 ft. in height. These four exquisite multi-level residences are unlike anything you've seen before—exclusively available on the 12th, 15th, 17th & 19th floors.

